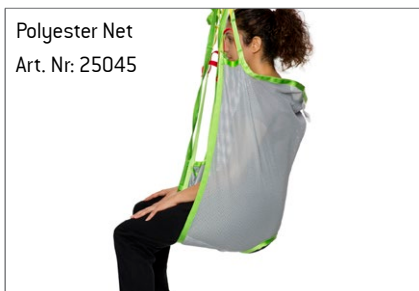




Back Support

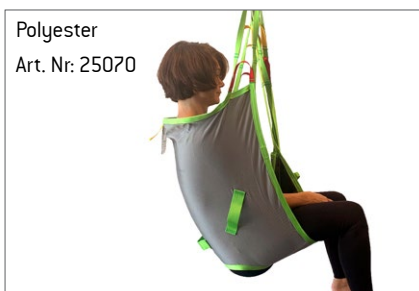
Upright Seating

Divided Legs



Supportive Sling Option

Our Basic Slings adapt to the patient's body and offer good support for the entire back and are a good choice when it is unknown who will be using the sling. They come in three convenient fabrics to accommodate most lifting situations.



Three Fabric Choices

The Basic Sling is a comfortable sling that is available in three fabric choices - Polyester, Polyester Net and Soft Air Mesh. The Soft Air Mesh and Polyester Net materials allow moisture and heat to transfer efficiently from the patient which allows the sling to be left behind the patient for a short period of time after the transfer is complete. The Polyester Net fabric is flexible, airy and dries quickly which makes it suitable for use in bathing environments.

stability and upright seating which is especially helpful to ensure proper positioning is achieved when the patient is placed in a chair or other seating. They can be used with a 2-point, 3-point or 4-point suspension depending on the need.



Upright Seating

Our Basic Slings offer good support for the entire back without head support, reinforcements or padding. They are suitable for patients with poor trunk

Easy Care and Easy Fit

Our slings are manufactured to the highest quality standards. They feature reinforced straps and high strength nylon webbing around the sling to make them strong enough to resist even the most active use. Each sling label is colour coded to ensure quick and easy selection of the correct sling and the straps are colour coded for easy determination of required positioning.



Accessories



Extension Loops
Used to extend lift straps in order to alter lifting position or to hold leg parts together. Assorted lengths. Part no.:21180-*



Leg Padding and Supports
Ideal for users with sensitive skin or pain. Part no.: 21146-S, M, L Reinforced supports. One size. Part no. 25102



Upholstered Cover
Protects user from hanger bar impact. Not for use in a wet environment. Part no. 50866



Hanger Bars for 2-, 3- or 4-point Suspension
Part no. 57551, 55764 (2- or 3-Point - Quick Release), 55619 (4-Point - Attach to leg hook)

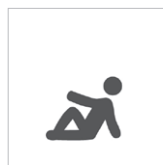
Lifting Situation



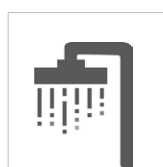
Use to/from a bed
Suitable for transfers and repositioning to and from a bed. Can be left behind patient for short period of time.



Use to/from a chair
Suitable for transfers and repositioning to and from a chair. Can be left behind patient for short period of time.



Use to/from the floor
Suitable for transfers from the floor.

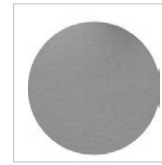


Use for showering
Only Polyester Net fabric can be used for this application.

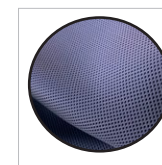
Care and Features



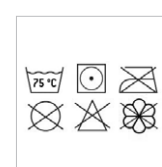
Polyester Net
Soft, thin material that breathes and dries quickly. Ideal for bathing or showering..



Polyester
Durable material with a low coefficient of friction, making it easy to apply and clean. Equipped with handles.



Soft Air Mesh
Lightweight, cool and breathable material. Suitable for sensitive skin.



Care
Care instructions located on sling label. Use a hospital grade laundry bag while laundering

Technical specifications

Article number			Size	Colour	A	B	C
Polyester net	Soft Air Mesh	Polyester					
25045-JS	25054-JS	25070-JS	Junior Small	JS	22 cm / 8,7"	62 cm / 24,4"	50 cm / 19,7"
25045-JM	25054-JM	25070-JM	Junior Medium	JM	28 cm / 11"	65 cm / 25,6"	54 cm / 21,3"
25045-S	25054-S	25070-S	Small	S	35 cm / 13,8"	77 cm / 30,3"	58 cm / 22,8"
25045-M	25054-M	25070-M	Medium	M	40 cm / 15,7"	88 cm / 34,6"	63 cm / 24,8"
25045-L	25054-L	25070-L	Large	L	44 cm / 17,3"	98 cm / 38,6"	65 cm / 25,6"
25045-XL	25054-XL	25070-XL	Extra Large	XL	48 cm / 18,9"	102 cm / 40,2"	70 cm / 27,6"
25045-XXL	not available	25070-XXL	XX-Large	XXL	52 cm	108 cm	74 cm

Maximum user weight: 300 kg / 660 lb

* Available in assorted lengths: 10cm/3.9" (21180-10), 15cm/5.9" (21180-15), 20cm/7.8" (21180-20), 25cm/9.8" (21180-25), 35cm/13.7" (21180-35)

“ We improve freedom of movement and quality of care for people.

www.humancaregroup.com



HUMAN CARE SWEDEN (HQ)
Årstaängsvägen 21B
117 43 Stockholm
+46 8 665 35 00
info@humancaregroup.com

HUMAN CARE CANADA
10-155 Colonnade Road
ON K2E 7K1 Ottawa
+1 613 723 6734
info.ca@humancaregroup.com

HUMAN CARE THE NETHERLANDS
Elspeterweg 124
8076 PA Vierhouten
+31 577 41 21 71
info.nl@humancaregroup.com

HUMAN CARE UNITED STATES
8006 Cameron rd, Suite K
TX 78754 Austin
+1 5 124 76 7199
info.us@humancaregroup.com