

Back belt



Back Support
Reinforced
SPU Option

Model #25130



Model #9037*



Our series of back belts are designed for use with sit-to-stand devices and help safely raise or lower patients from a bed, chair or toilet. The wide reinforced back support allows for gait training or mobilization exercises when the foot plate is removed from the device.

Optimal Comfort

Our Back Belts are all designed to create an ergonomic pattern of movement. The lifting straps can be connected at different lengths to fit most patients and the central section of the belt has soft padding for optimal comfort. This belt is recommended for patients with poor trunk stability and difficulty standing. Some leg control is necessary to use this product.

Single Patient Use (SPU)

The Back Belt is available in either reusable models or single patient use models. The single patient use back belt is available with straps or clips and offers the convenient option of disposal after use. Ensuring that

the belt is used only by a single patient provides the added benefit of hygiene control. Our Back Belts can only be used with a Sit-to-Stand device.

Easy Care and Easy Fit

Our slings are manufactured to the highest quality standards. They feature reinforced straps and high strength nylon webbing around the sling to make them strong enough to resist even the most active use. Each sling label is colour coded to ensure quick and easy selection of the correct sling and the straps are colour coded for easy determination of required positioning.

HUMAN CARE SWEDEN (HQ)

Årstaängsvägen 21B
117 43 Stockholm
Phone:- +46 8 665 35 00
Fax:- +46 8 665 35 10
info.se@humancaregroup.com

HUMAN CARE CANADA

10-155 Colonnade Road
Ottawa, ON K2E 7K1
Phone: +613.723.6734
Fax: +613.723.1058
info.ca@humancaregroup.com

HUMAN CARE NEDERLAND

Elspeterweg 124
8076 PA Vierhouten
Phone: +31 577 412 171
Fax: +31 577 412 170
info.nl@humancaregroup.com

HUMAN CARE UNITED STATES

8006 Cameron Road, Suite K
Austin, TX 78754
Phone: +512.476.7199
Fax: +512.476.7190
info.us@humancaregroup.com

Accessories



Sit-to-Stand Device

This product is designed to work with a Sit-to-Stand device and should never be used with any other lifting solution.

Lifting Situations



Use to/from a bed

Suitable to lower/raise patient to and from a bed when they are in the seated position.



Use to/from a chair

Suitable to lower/raise patient to and from a chair.



Use for gait training/ mobilization

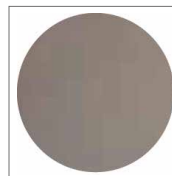
Suitable for gait training and rehabilitation exercises.



Use for toileting

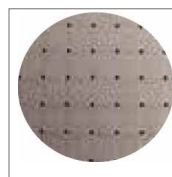
Suitable to lower/raise patient to and from a toilet.

Care and Features



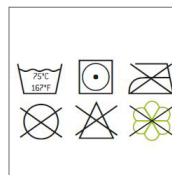
Polyester

Durable, low-friction, easy to clean, apply and remove.



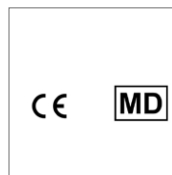
Cotton

Convenient option of disposal after use combined with added benefit of hygiene control.



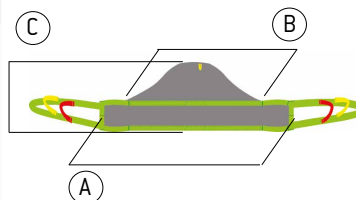
Care

Care instructions located on sling label. Use a hospital grade laundry bag while laundering.



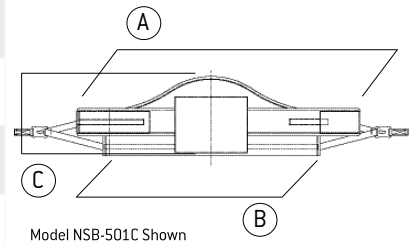
Technical Specifications

Part Number	Size	Colour	A	B	C
Polyester/Loop Attachment			Strap Length	Chest Belt Length	Chest Belt Height
25130-S	Small		76cm / 30"	88cm / 35"	33cm / 13"
25130-M	Medium		94cm / 37"	88cm / 35"	33cm / 13"
25130-L	Large		112cm / 44.1"	88cm / 35"	33cm / 13"
25130-XL	Extra Large		132cm / 52"	88cm / 35"	33cm / 13"
Weight Capacity	25130-*	250kg / 551lb			

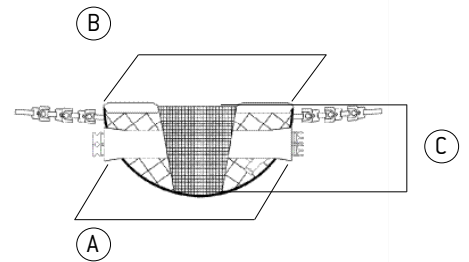


Technical Specifications

Part Number		Size	Colour	A	B	C
Cotton/Loop	Cotton/Clip	Single Patient Use		Strap Length	Chest Belt Length	Chest Belt Height
NSB-501-S	NSB-501C-S	Small	S	107.5cm / 42.3"	88.9cm / 35"	33cm / 13"
NSB-501-M	NSB-501C-M	Medium	M	115cm / 45.3"	88.9cm / 35"	33cm / 13"
NSB-501-L	NSB-501C-L	Large	L	130cm / 51.2"	88.9cm / 35"	33cm / 13"
n/a	NSB-501C-XL	Extra Large	XL	135cm / 53.1"	88.9cm / 35"	33cm / 13"
American Sling/Foam Filled,Nylon, Clip						
90378		Small	S	111.8cm / 44"	69.9cm / 27.5"	21.6cm / 8.5"
90374		Medium	M	121.9cm / 48"	77.5cm / 30.5"	24.1cm / 9.5"
90375		Large	L	135.9cm / 53.5"	90.2cm / 35.5"	25.4cm / 10"
90376		Extra Large	XL	142.2" / 56"	96.5cm / 38"	30.5cm / 12"
90377		Bariatric	XXL	154.9cm / 61"	111.8cm / 44"	30.5cm / 12"
Weight Capacity	NSB-501*	250kg / 551lb			9037*	250kg/551lb
	NSB-501C*	200kg/440lb				



Model NSB-501C Shown



Note: Not all back belts are available in all countries.